



# COOLREF

## SWING DOOR

COOLREF Swing Door is designed for both walk-in cooler and freezer. Our swing doors are certified with NSF that ensures the sanitation and safety to be used for the food industry.

### ADVANTAGE

---

- NSF certified
- Automatically closed
- Safe for food and workers
- Structural fabricated
- Tailor specifically for your needs

### MATERIAL

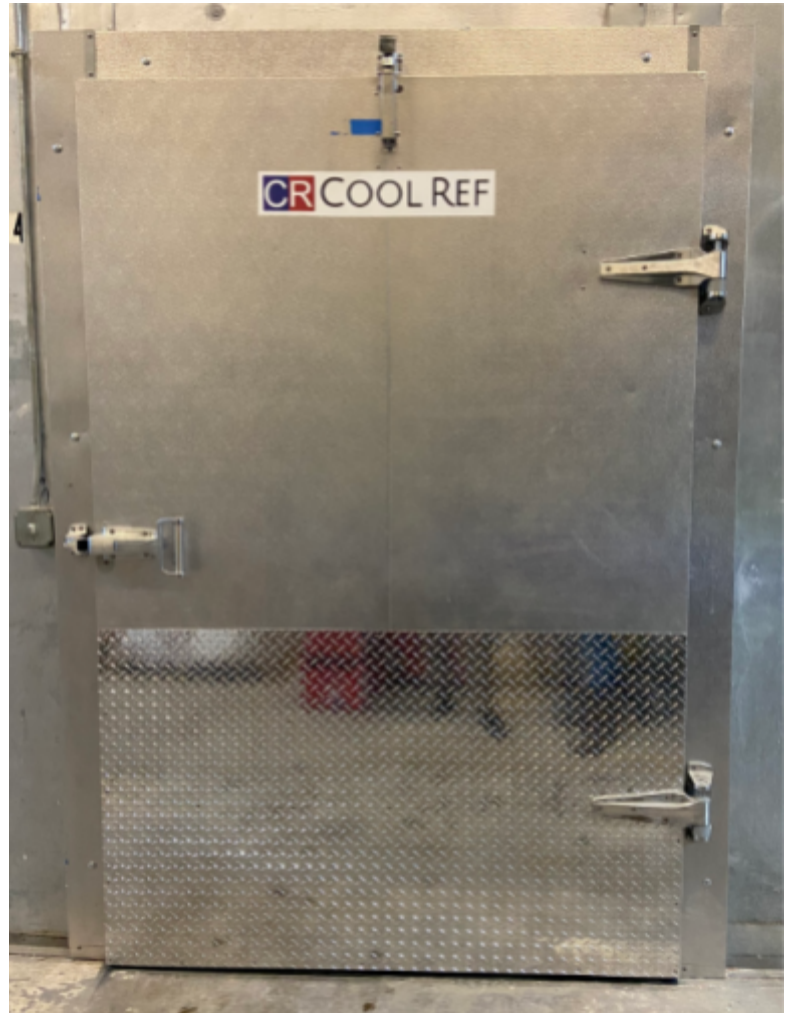
---

- Aluminum
- White-coated aluminum
- Stainless Steel
- Door frame heater (for freezer only)
- Accessories: pull handle, hinges, closer
- Aluminum Diamond Kickplate (optional)

### SIZE AVAILABLE

---

- Height: from 77" to 86"
- Width: from 30" to 60"
- Thickness: 4"



**COOLREF LLC**

Refrigeration System Manufacturer  
Houston, TX 77066

Email: [coolref@outlook.com](mailto:coolref@outlook.com)  
Website: [www.cool-ref.com](http://www.cool-ref.com)